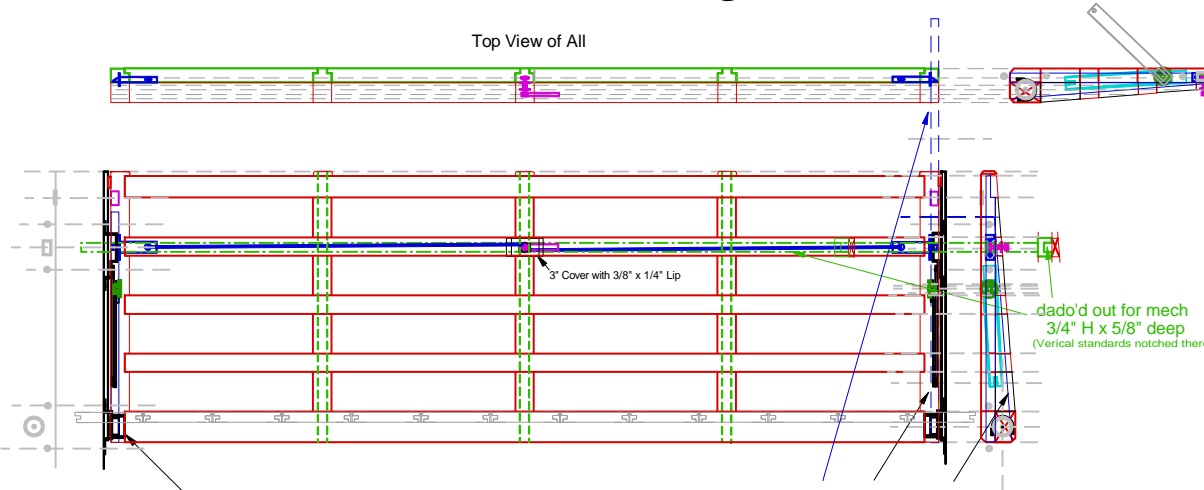
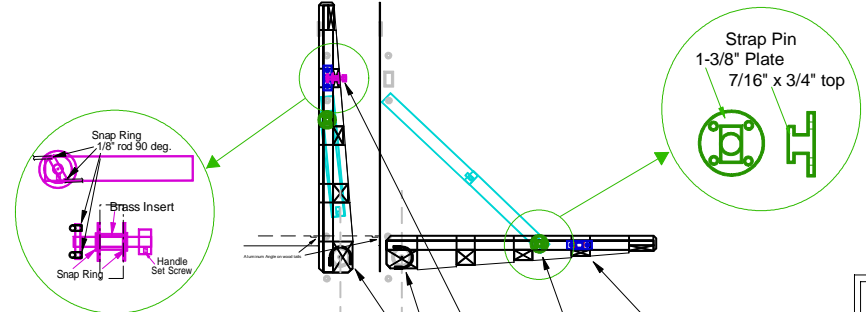


Tailgate



1-1/2" steel pipe insert for hinge with Right bottom blank for tailgate removal design locking mech???



Plus hardware including pipe, handle, hinge supports, latches

Material List:

Horizontal Pieces:

- A) Backs *: (Top four with 4 deg. rip on B.)
- 1 - 1.75 x .625 x 67.25
 - 2 - 1.5 x .625 x 32 (each side of handle mech cover)
 - 1 - 1.5 x 1 x 67.25
 - 1 - 1.5 x 1.35 x 67.25
 - 1 - 2.5 x 1.625 x 67.25

B) Blocks: } All with 3/8" Front Lips both sides (Glued and screwed to above backs)

- 4 - 1.75 x 1.125 x 15.65
- 12 - 1.5 x 1.125 x 15.65 (four of which dado'd out for mech)
- 4 - 2.5 x 1.125 x 15.65

Vertical Pieces:

A) Standards: Locked into above B) Blocks

- 2 - Sides 1.5 x 1.125 x 22 with one 3/8" rabbit one corner
 - 3 - Middles 1.5 x 1.125 x 22 with 3/8" rabbit both corners
- All with top rail notched in .5 x 1-3/4" and 3/4" x 5/8" (top rail) (mech)

B) Fillers: All to be flush both sides - glued in.

- 5 - 1.5 x .5 to .23 x 3.175
- 5 - 1.5 x .85 to .61 x 3.175
- 5 - 1.5 x 1.25 to .97 x 3.175
- 5 - 1.5 x 1.625 to 1.36 x 3.175

5 - 1 x 8 x 8' faces glued together 2 and 3; to end with one - 1.5" x 8" x 8' and one 2.25" x 8" x 8'

3 - 1 x 8 x 6' glued together 2 - 1 x 4 x 2' glued together

2 - 1 x 8 x 6' glued together 2 - 1 x 8 x 2' glued together

* 'Front' means toward front of vehicle, drawing is looking at 'Back'