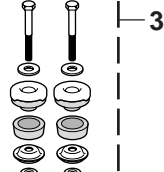


## Cab / Bed to Frame Mounting Hardware (as Original) / Radiator Core Support

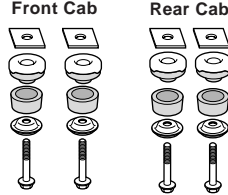
**Chevrolet Truck 1981-87**  
**GMC Truck 1981-87**  
**Chevrolet Crew Cab 1981-89**  
**GMC Truck Crew Cab 1981-89**

### Fleetside Complete Mounting Kit

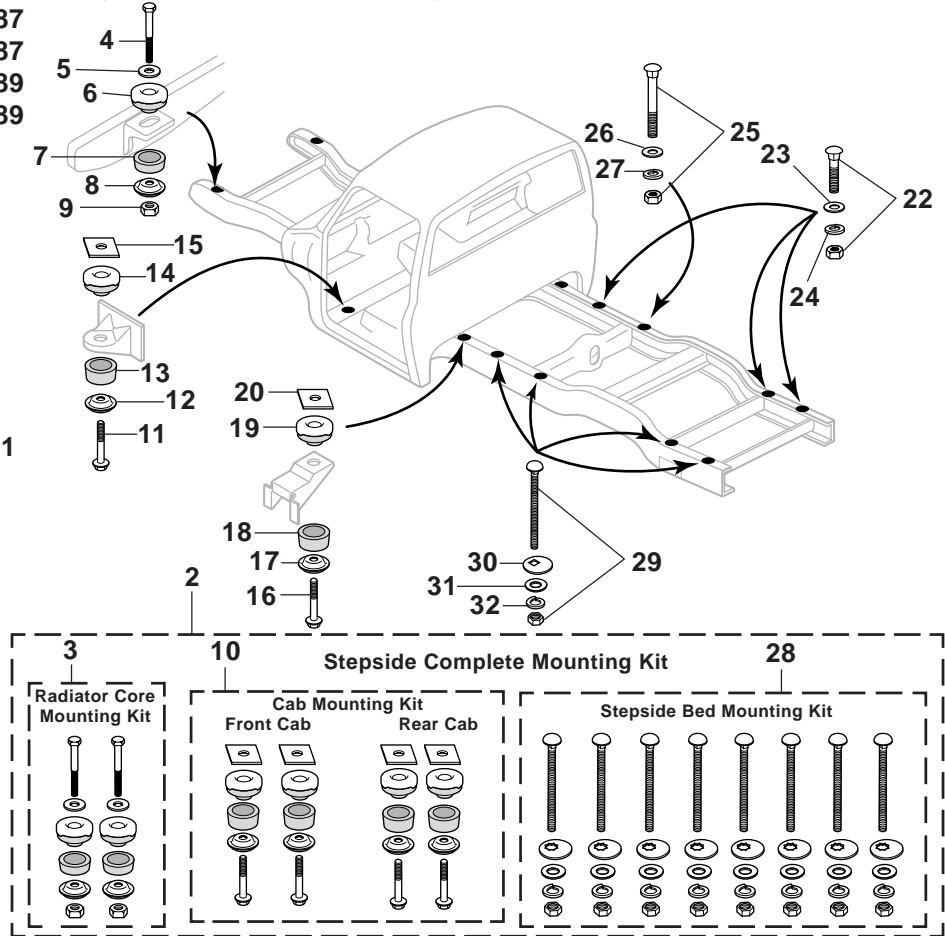
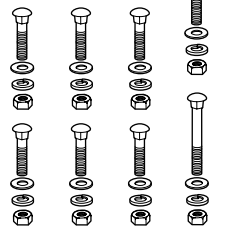
#### Radiator Core Mounting Kit



#### Cab Mounting Kit

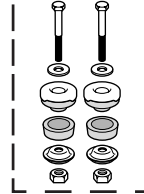


#### Fleetside Bed Mounting Kit

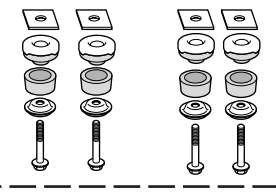


### Stepside Complete Mounting Kit

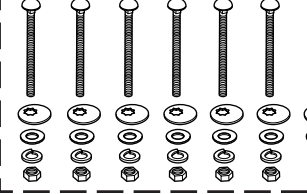
#### Radiator Core Mounting Kit



#### Cab Mounting Kit



#### Stepside Bed Mounting Kit



### Cab to Frame Mounting Kit - Fleetside/Stepside

30-0168	(10) CAB MOUNT KIT-FRT/REAR 20PC STD CAB	81-83 (1)	174.94	139.95
30-0169	CAB MOUNT KIT-FRT/REAR 20PC STD CAB	84-87 (1)	174.94	139.95
30-1165	CAB MOUNT KIT-FRT/REAR 28PC CREW CAB	81-83 (1)	199.94	159.95
30-1166	CAB MOUNT KIT-FRT/REAR 28PC CREW CAB	84-89 (1)	199.94	159.95

30-0277	(11) HEX BOLT	CHEVY GMC 81-87 (2)	4.94	3.95
30-1354	(12) RETAINER	CHEVY GMC 81-87 (2)	11.19	8.95
30-2023	(13) LOWER CUSHION-CAB MOUNT	CHEVY GMC 81-83 (2)	24.94	19.95
30-2025	LOWER CUSHION-CAB MOUNT	CHEVY GMC 84-87 (2)	24.94	19.95
30-2021	(14) UPPER CUSHION-CAB MOUNT	CHEVY GMC 81-87 (2)	24.94	19.95
30-2830	(15) SHIM	CHEVY GMC 81-87 (2)	7.44	5.95

30-0277	(11) HEX BOLT	CREW CAB 81-89 (4)	4.94	3.95
30-1354	(12) RETAINER	CREW CAB 81-89 (4)	11.19	8.95
30-2023	(13) LOWER CUSHION-CAB MOUNT	CREW CAB 81-83 (4)	24.94	19.95
30-2025	LOWER CUSHION-CAB MOUNT	CREW CAB 84-89 (4)	24.94	19.95
30-2021	(14) UPPER CUSHION-CAB MOUNT	CREW CAB 81-89 (4)	24.94	19.95
30-2830	(15) SHIM	CREW CAB 81-89 (4)	7.44	5.95

30-0277	(16) HEX BOLT	CHEVY GMC 81-87 (2)	4.94	3.95
30-1354	(17) RETAINER	CHEVY GMC 81-87 (2)	11.19	8.95
30-2023	(18) LOWER CUSHION-CAB MOUNT	CHEVY GMC 81-83 (2)	24.94	19.95
30-2025	LOWER CUSHION-CAB MOUNT	CHEVY GMC 84-87 (2)	24.94	19.95
30-2021	(19) UPPER CUSHION-CAB MOUNT	CHEVY GMC 81-87 (2)	24.94	19.95
30-2830	(20) SHIM	CHEVY GMC 81-87 (2)	7.44	5.95

### Fleetside Bed to Frame Mounting Kit

30-0120	(21) BED MOUNT HARDWARE KIT 32PC FLEETSIDE	81-87 (1)	37.44	29.95
30-0246	(22) BED MOUNT BOLT W/NUT	FLEETSIDE 81-87 (6)	6.19	4.95
30-0676	(23) FLAT WASHER	FLEETSIDE 81-87 (6)	.38	.30
30-0680	(24) LOCK WASHER	FLEETSIDE 81-87 (6)	.56	.45

30-0350	(25) BODY HOLD DOWN BOLT W/NUT	FLEETSIDE 81-87 (2)	8.69	6.95
30-0676	(26) FLAT WASHER	FLEETSIDE 81-87 (2)	.38	.30
30-0680	(27) LOCK WASHER	FLEETSIDE 81-87 (2)	.56	.45

### Stepside Bed to Frame Mounting Kit

30-0144	(28) BED MOUNT BOLT KIT-STL 40PC STEPSIDE	81-87 (1)	24.94	19.95
30-0138	BED MOUNT BOLT KIT-SS 40PC STEPSIDE	81-87 (1)	49.94	39.95
30-0292	(29) CARRIAGE BOLT W/NUT	STEPSIDE 81-87 (8)	2.44	1.95
30-0645	(30) OFFSET WASHER	STEPSIDE 81-87 (8)	3.69	2.95
30-0705	(31) FLAT WASHER	STEPSIDE 81-87 (8)	.81	.65
30-0628	(32) LOCK WASHER	STEPSIDE 81-87 (8)	.44	.35

One kit does the job! The complete mounting kit includes the Radiator Core Support Mounting Kit, Front and Rear Cab to Frame Mounting Kit and the Bed to Frame Mounting Kit. These rubber cushions are made exactly like the originals from the factory. Installing new cushions will help return your truck to its original smooth ride. Replace your rusted, corroded hardware for safety and security. This kit does it all and saves you money! Call or go online and order yours today!

PART	ILL#	DESCRIPTION AND APPLICATION	REQD	LIST	SELL
<b>Fleetside Complete Mounting Kit</b>					
30-0164	(1)	COMPLETE MOUNTING KIT 64PC STD CAB			
		RAD CORE/CAB/BED TO FRAME	CHEVY GMC 81-83 (1)	187.44	149.95
30-0166		COMPLETE MOUNTING KIT 64PC STD CAB			
		RAD CORE/CAB/BED TO FRAME	CHEVY GMC 84-87 (1)	187.44	149.95
30-1162		COMPLETE MOUNTING KIT 72PC			
		RAD CORE/CAB/BED TO FRAME	CREW CAB 81-83 (1)	249.94	199.95
30-1163		COMPLETE MOUNTING KIT 72PC			
		RAD CORE/CAB/BED TO FRAME	CREW CAB 84-89 (1)	249.94	199.95
<b>Stepside Complete Mounting Kit</b>					
30-0581	(2)	COMPLETE MOUNTING KIT 72PC STEPSIDE			
		RAD CORE/CAB/BED TO FRAME	CHEVY GMC 81-83 (1)	174.94	139.95
30-0582		COMPLETE MOUNTING KIT 72PC STEPSIDE			
		RAD CORE/CAB/BED TO FRAME	CHEVY GMC 84-87 (1)	174.94	139.95
<b>Radiator Core Support Mounting Kit - Fleetside/Stepside</b>					
30-0163	(3)	RAD CORE MOUNT KIT 12PC	CHEVY GMC 81-87 (1)	112.44	89.95
30-0205	(4)	HEX BOLT	CHEVY GMC 81-87 (2)	2.44	1.95
30-0685	(5)	FLAT WASHER	CHEVY GMC 81-87 (2)	.50	.40
30-2021	(6)	UPPER CUSHION-CORE MOUNT	CHEVY GMC 81-87 (2)	24.94	19.95
30-2025	(7)	LOWER CUSHION-CORE MOUNT	CHEVY GMC 81-87 (2)	24.94	19.95
30-1354	(8)	RETAINER	CHEVY GMC 81-87 (2)	11.19	8.95
30-0808	(9)	TORQUE LOCK NUT	CHEVY GMC 81-87 (2)	1.19	.95